



## Read and Save These Instructions

---

# INSTALLATION & MAINTENANCE INSTRUCTIONS

## QBR & USBR

---

### RECEIVING AND INSPECTION

Immediately upon receipt of a shipment, carefully inspect for damage and shortage. Turn the impeller by hand to see that it turns freely and does not bind. If any damage and/or shortage is detected or suspected, the carrier must be asked to conduct an inspection. The consignee's representative should not accept a shipment without a notation on the delivery receipt indicating items not delivered or the apparent extent of damage.

When a shipment is opened and damage is found which was not evident externally (concealed damage), it is mandatory that the consignee request an immediate inspection by the carrier. Report any damage to the carrier within 15 days. Failure to report damage within the above time limit will result in rejection of a claim.

### HANDLING

When handling fans and their accessories, always use equipment and methods that will not cause damage. Fans should be lifted using slings and padding or spreaders to avoid damage.

**CAUTION!** Always make sure that all lifting and handling equipment and techniques conform to current safety standards.

Avoid lifting fans in a way that will bend or distort fan parts. Never pass slings or timbers through the orifices of fan.

**CAUTION!** Do not lift by the fan hood. Fans with special coatings or paints must be protected in handling to prevent damage.

### STORAGE

Fans are protected against damage during shipment. If they cannot be installed and put into operation immediately upon receipt certain precautions are necessary to prevent deterioration during storage. Responsibility for integrity of fans and accessories during storage must be assumed by the user. The manufacturer will not be responsible for damage during storage. These suggestions are provided solely as a convenience to the user, who shall make his own decision as to whether to use any or all of them.

**INDOOR:** The ideal storage environment for fans and accessories is indoors, above grade, in a low humidity atmosphere which is sealed to prevent the entry of

blowing dust, rain, or snow. Temperatures should be evenly maintained at between 70°F and 105°F (wide temperature swings may cause condensation and "sweating" of metal parts). Windows should be covered to prevent temperature variations caused by sunlight. Provide thermometers and humidity indicators at several points and maintain the atmosphere at 40% relative humidity, or lower.

It may be necessary to use trays of renewable desiccant or portable dehumidifier to remove moisture from the air in the storage enclosure.

Thermostatically controlled portable heaters (vented to outdoors) may be required to maintain even temperatures inside the enclosure.

**CAUTION!** Provide fire extinguishers, or fire alarms, or emergency response communication to protect building and equipment against fire damage. Be sure that building and storage practices meet all local, state and federal fire and safety codes.

The following fans or accessories must be stored indoors, in a clean dry atmosphere:

- a. Propeller wall fans not in wall housings.
- b. Any fan protected by a cardboard carton.
- c. Motors dismantled from fans.
- d. Spare wheels or propellers.
- e. Belts, sheaves, bushings and other parts when not mounted on fan.
- f. Boxes, bags or cartons of hardware.
- g. Curbs
- h. Dampers

Remove any accumulations of dirt, water, ice or snow and wipe dry before moving indoor storage. Allow cold parts to reach room temperature to avoid "sweating" of metal parts. Open boxes or cartons. Remove any accumulated moisture; if necessary use portable electric heaters to dry parts and packages. Leave coverings loose to permit air circulation and to permit periodic inspection.

Rotate wheels or propellers by hand to distribute bearing grease over the entire bearing surfaces.

Store at least 3 ½" off the floor on wooden blocks covered with moisture proof paper or polyethylene sheathing. Provide aisles between parts and along all walls, to permit air circulation and space for inspection.

**OUTDOOR:** Fans designed for outdoor use may be stored outdoors, if absolutely necessary. The storage

area should be reasonably level and drained or ditched to prevent accumulation of water. Fencing and lighting for security are desirable. Roads or aisles for portable cranes and hauling equipment are needed. Consider the use of drift fencing to minimize accumulation of blowing snow or dirt.

The following fans may be stored outdoors, if dry indoor storage space is not available:

- a. Fans intended for outdoor use that are crated in wood.
- b. Wall fans installed in wall housings.

All fans must be supported on wooden blocks or timbers above water or normal snow levels. Provide enough blocking to prevent settling into soft ground. Fans should be set in place using the directional arrow markings on the crate as a guide.

Locate pieces far enough apart to permit air circulation, sunlight, and space for periodic inspection. Place all parts on their supports so that rain water will run off, or to minimize water accumulation. **Do not** cover parts with plastic film or tarps-these cause condensation of moisture from the air passing through heating and cooling cycles.

Fan wheels and propellers should be blocked to prevent spinning caused by strong winds.

#### INSPECTION AND MAINTENANCE DURING STORAGE

Inspect fans and accessories at least once per month, while in storage. Log results of inspection and maintenance performed. A typical log entry should include the following:

- a. Date
- b. Inspector's Name
- c. Name of Fan
- d. Location
- e. Condition of Paint or Coating
- f. Is moisture present?
- g. Is dirt accumulated?
- h. Corrective steps taken?

If moisture or dirt accumulations are found on parts, the source should be located and eliminated. Fans should be rotated at each inspection by hand ten to fifteen revolutions to redistribute the motor and bearing lubricant.

If paint deterioration begins, consideration should be given to touch-up or repainting. Fans with special coatings may require special techniques for touch-up or repair.

Machined parts coated with rust preventive should be restored to good condition promptly if signs of rust occur. The most critical items are pulleys, shafts and bearing locking collars. At the first sign of rusting on any

of the above parts, remove the original rust preventive coating with petroleum solvent and clean lint-free cloths. Polish any remaining rust from surfaces with crocus cloth or fine emery paper and oil. **Do not** destroy the continuity of the surfaces. Wipe clean with lint-free cloths and recoat surfaces evenly and thoroughly with Tectly 506 (Ashland Oil Company) or equal. For hard to reach internal surfaces or for occasional use, consider using Tectly 511M Rust Preventive or WD40 or equal.

#### REMOVING FROM STORAGE

As fans are removed from storage to be installed in their final location, they should be protected and maintained in similar fashion, until the fan equipment goes into operation.

#### INSTALLATION

1. **CAUTION!** This unit has rotating parts and safety precautions should be exercised during installation, operation and maintenance.
2. **WARNING! Do not** use in hazardous environments where fan's electrical system could provide ignition to combustible or flammable materials, unless the unit is specifically built for hazardous environments.
3. The fan should be mounted on a solid foundation equipped with anchoring devices (such as anchor bolts). Level the fan on the foundation, shimming where necessary. Anchor the fan securely to the foundation. If vibration isolators are used, these should be installed between the fan and the foundation. When mounted on suspended platforms adequate cross bracing will be required.
4. Check pulley alignment and belt tension. Belt should deflect 1/2" to 3/4" (13mm to 19mm) when depressed by hand midpoint between pulleys.
5. **CAUTION!** Before proceeding, make sure electrical service to fan is locked in "OFF" position.
6. All wiring should be in accordance with local ordinances and the National Electric Code.
7. **WARNING!** Check voltage at the fan to see if it corresponds with the motor nameplate. High or low voltage can seriously damage the motor. Extra care should be taken when wiring two speed motors since improper connections will damage motor and void motor warranty.
8. Apply power momentarily and compare the rotation of the impeller with directional arrow on fan. In the case of three phase motors, the direction can be reversed by interchanging any two of the three motor leads. In the case of single phase motors, the reversing instructions appear on the wiring diagram in the motor wiring compartment.

9. **WARNING!** Operation in the wrong direction will deliver air but will overload the motor and could seriously damage the motor.

10. **OUTDOORS** When installed outdoors, units should be provided with Weather Covers available as an optional accessory from the Company. Outlet dampers attached to the fan discharge should be normally closed when the fan is not running.

11. **CAUTION!** Inlet guards (available from the company as optional equipment) must be installed whenever the fan is installed without ducts attached to the fan inlet.

12. **CAUTION!** Guards must be installed when fan is within reach of personnel or within seven (7) feet (2.134m) of working level or when deemed advisable for safety.

### 13. **IMPELLER - INLET VENTURI ADJUSTMENT**

Adjustment can be achieved through the use of the slotted holes provided in the fan construction.

For vertical movement, adjust the bearing base support up or down on the side plates of the motor and drive compartment. After any adjustment, the bearing base should be checked to assure its being level.

For horizontal movement the lower half of the duplex split pillow bearing housing is slotted for sideways adjustment. By loosening either set of these bolts, the impeller can be moved to provide running clearance between it and the inlet venturi. Be sure to re-tighten all bolts after proper clearances are obtained.

## **MAINTENANCE**

1. Under normal usage, no spare parts are recommended for one year of operation. Recommended spare parts are shown on page 4.

2. **CAUTION!** Before proceeding, make sure the electrical service to the fan is locked in "OFF" position.

**WINDMILLING:** Even when the power supply is locked out, fans may cause injury or damage if the impeller is subject "windmilling" which is the turning of the impeller and drive components due to a draft in the system. To guard against this hazard, the impeller should be secured to physically restrict rotational movement.

3. **REGULAR MAINTENANCE** Determined by the condition of the air passing through the fans, regularly scheduled inspection of all fan parts establishes a good maintenance routine. When the air is clean, maintenance can be as infrequent as once a year. When air is contaminated,

maintenance may be required as often as once a month. Regular maintenance should include inspection and cleaning of all fan parts.

4. Check belt tension after first 48 hours of operation and thereafter annually. Belt should depress its width when pressed firmly inward at midway point between the pulleys. Too much tension will damage bearings. Belt should be tight enough to prevent slippage. When replacing worn belt, replace motor pulley if "shoulder" is worn in groove. For 2 belt drives, be sure to replace both belts with a matched set. **Do not** adjust belts too tightly as this will cause undue wear on the bearings of both fan and motor. Motor pulleys should be inspected regularly and replaced if they show evidence of excessive wear or "grooving".

**WARNING!** Do not operate at speeds higher than that cataloged for this equipment. **Do not** replace motor pulley with a larger diameter pulley. **Do not** replace the fan pulley with one smaller in diameter. The pulley ratios are set so that the motor will not be overloaded.

5. Impeller shaft bearings on units with duplex split pillow block housing are prelubricated and **do not** require relubrication. Units with pillow block bearings have grease fittings and, under normal operation will need no relubrication for 3 to 5 years. If relubrication is required, use a grease conforming to NLGI No. 2. **CAUTION!** Lubricating bearings with a high pressure gun can blow bearing seals and overfill the bearing with grease. This condition can result in excessive churning and over heating. For normal operating conditions it is standard practice to fill only 30% of the bearing void with grease. **Do not** over lubricate.

**NOTE:** If locking collar type bearing is used, collar must first be positioned against inner race on bearing nearest impeller and turned in direction of impeller rotation with drift pin and hammer until it locks. Locking collars must be on inboard (facing) sides of the bearings. Secure bearing to shaft with set screw. Lock and secure other bearing to shaft in same manner.

**NOTE:** If pillow block type bearings are used, slide bearings onto the shaft to desired location and bolt bearing block securely to support base. Slide shaft back and forth in secured bearing (**do not** drive with hammer) and rotate to make certain it turns freely. Check correct position of impeller with inlet orifice. Then secure bearings to shaft by tightening set screws.

6. Motor bearings are prelubricated. Consult information printed on the motor for lubrication instructions.

## SET SCREW TIGHTENING SCHEDULE

1. Before initial operation of the fan, tighten set screws according to the procedure outlined below.
2. After 500 operating hours or three months, whichever comes first, tighten set screws to the full recommended torque.
3. At least once a year, tighten set screws to the full recommended torque.

### PROCEDURE FOR TIGHTENING SET SCREWS IN BEARINGS AND HUBS

#### One Set Screw Application

Using a torque wrench, tighten the set screw to the torque recommended in Table 1.

#### Two Set Screw Application

1. Using a torque wrench, tighten one set screw to half of the torque recommended in Table 1.
2. Tighten the second set screw to the full recommended torque.
3. Tighten the first set screw to the full recommended torque.

**Table 1. Recommended Tightening Torque for Set Screws**

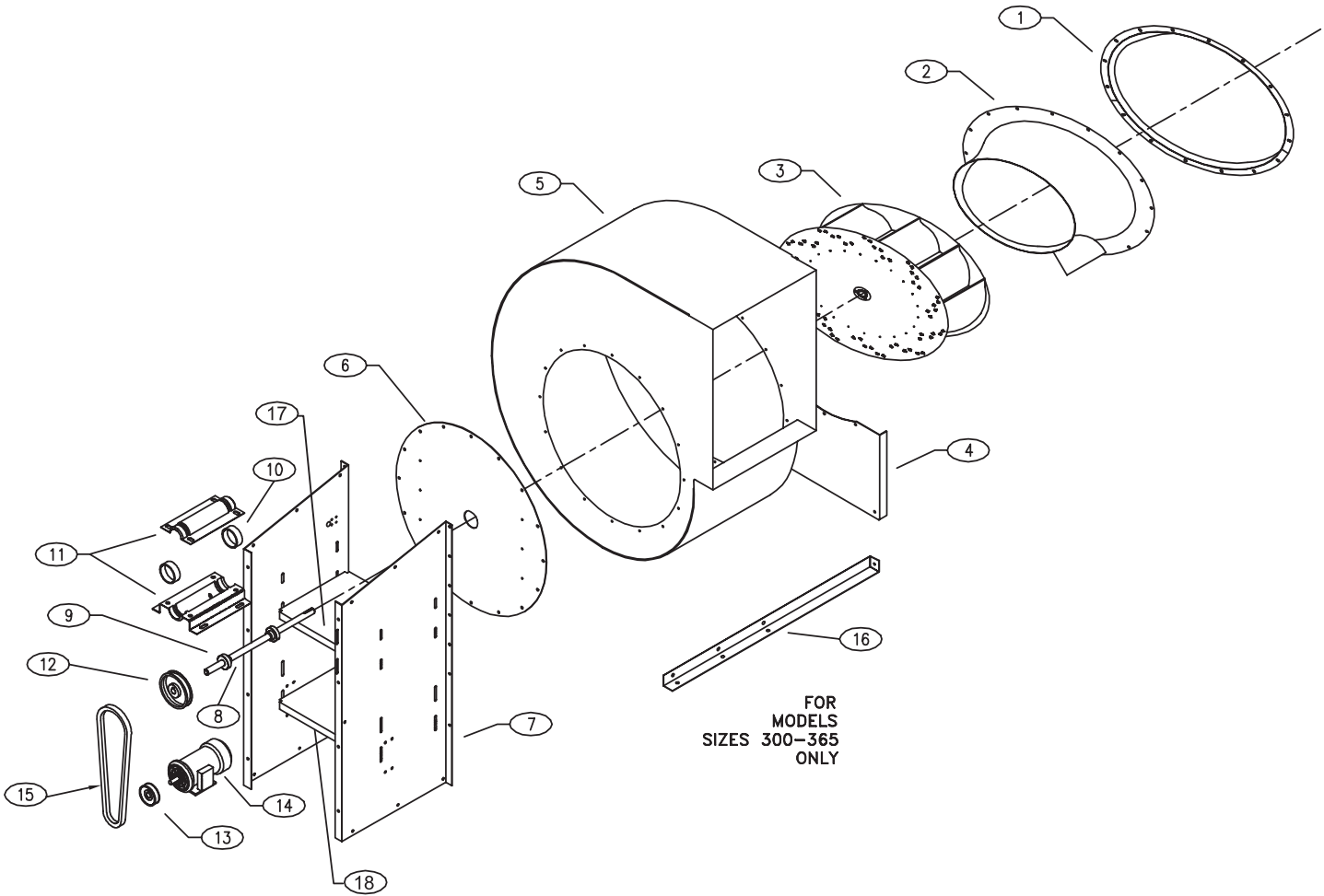
Set Screw Diameter	Torque (in-lbs)
#10	35
1/4	80
5/16	126
3/8	240
7/16	384
1/2	744
9/16	1080
5/8	1500
3/4	2580
7/8	3600
1	5400

## VARIABLE FREQUENCY DRIVES AND MOTORS

There are occasions when a Variable Frequency Drive (VFD) will cause poor motor performance and possible damage. To avoid these problems, the Company recommends the following:

1. Select compatible motor and VFD converter; if possible, the motor and the converter should be from the same manufacturer or at least the converter selected should be recommended by the motor manufacturer.
2. A motor shaft grounding system should be used to prevent motor bearing damage from eddy currents.

**NOTE: The Company will not honor motor warranty claims if the customer fails to follow these recommendations.**



FOR  
MODELS  
SIZES 300-365  
ONLY

**PARTS LIST LEGEND**

No.	Description	No.	Description
1.	Inlet Collar	10.	Neoprene Rings
2.	Inlet Cone	11.	Duplex Bearing Housing-Upper and Lower Half
3.	Impeller*	12.	Fan Sheave*
4.	Inlet Side Support	13.	Motor Sheave*
5.	Housing	14.	Motor*
6.	Mounting Plate	15.	Belt*
7.	Compartment Side Right/Left	16.	Base Support Angle
8.	Shaft*	17.	Bearing Base*
9.	Bearings*	18.	Motor Base*

\*Recommended Spare Parts

### RPM SELECTION TABLE

MODEL SIZE	HP	FAN RPM VS NUMBER OF TURNS FROM FULL CLOSED										
		0	½	1	1 ½	2	2 ½	3	3 ½	4	4 ½	5
100E1	¼	2085	2013	1941	1869	1797	1725	1653	1581	1509	1438	1365
100E2	¼	2465	2382	2300	2218	2136	2054	1971	1889	1807	1725	1645
100F	¼	2850	2775	2700	2625	2550	2475	2400	2325	2250	2175	2100
100G	¼	3165	3091	3019	2947	2875	2803	2731	2659	2588	2516	2445
137F	¼	1440	1390	1342	1294	1246	1198	1150	1102	1054	1006	960
137G	½	1630	1581	1533	1485	1438	1390	1342	1294	1246	1198	1150
137H	¾	1865	1818	1771	1724	1677	1630	1583	1536	1489	1442	1395
137J	1	2095	2051	2004	1958	1911	1864	1818	1771	1725	1678	1630
137K	1½	2370	2318	2264	2210	2156	2102	2048	1995	1941	1887	1835
137L	2	2610	2561	2513	2464	2416	2367	2319	2270	2222	2173	2125
161F	¼	1080	1042	1006	970	934	898	862	826	791	755	720
161G	½	1215	1182	1150	1118	1086	1054	1022	990	958	926	895
161H	¾	1430	1394	1358	1321	1285	1248	1211	1174	1138	1101	1065
161J	1	1550	1504	1460	1415	1371	1327	1283	1238	1194	1150	1105
161K	1½	1770	1725	1680	1634	1589	1543	1498	1453	1407	1362	1315
161L	2	1990	1946	1902	1858	1813	1769	1725	1681	1636	1592	1550
161M	3	2260	2223	2185	2147	2108	2070	2031	1993	1955	1917	1878
200G	½	880	848	820	792	763	735	707	679	650	622	595
200H	¾	1010	976	944	911	879	846	814	781	749	716	685
200J	1	1105	1064	1028	991	954	918	881	844	807	771	735
200K	1½	1270	1237	1204	1172	1139	1107	1074	1041	1009	976	945
200L	2	1385	1355	1325	1294	1263	1232	1201	1171	1140	1109	1080
200M	3	1585	1549	1514	1479	1443	1408	1373	1338	1302	1267	1230
245H	¾	705	681	658	635	613	590	567	545	522	499	475
245J	1	780	762	742	722	702	682	662	642	622	602	580
245K	1½	885	862	840	817	794	772	749	726	704	681	660
245L	2	960	937	916	894	873	852	831	809	788	767	745
245M	3	1120	1099	1080	1061	1043	1024	1005	986	967	948	929
245N	5	1330	1301	1271	1241	1211	1180	1150	1120	1089	1059	1030
270H	¾	600	581	564	547	529	512	495	478	461	444	425
270J	1	660	639	618	596	575	554	532	511	490	469	445
270K	1½	745	724	703	681	660	639	618	596	575	554	530
270L	2	840	813	789	764	739	715	690	665	641	616	590
270M	3	960	937	916	894	873	851	831	809	788	767	745
270N	5	1120	1100	1078	1057	1035	1013	992	970	949	927	905
300J	1	555	541	527	513	499	485	470	456	442	428	415
300K	1½	640	627	613	599	584	570	556	542	527	513	500
300L	2	700	684	668	653	637	622	606	591	575	559	545
300M	3	790	767	745	724	703	681	660	639	618	596	575
300N	5	960	939	920	901	882	863	843	824	805	786	765
300P	7½	1101	1081	1060	1039	1018	998	977	956	935	914	895
330J	1	460	448	435	421	408	395	382	368	356	342	330
330K	1½	545	528	513	497	482	466	451	435	420	404	390
330L	2	595	579	566	553	540	527	514	500	487	474	460
330M	3	665	649	632	615	598	581	564	547	529	512	495
330N	5	810	790	769	748	727	707	686	665	644	623	605
330P	7½	925	910	894	878	863	847	831	815	800	784	770
365K	1½	460	448	435	421	408	395	382	369	356	342	320
365L	2	515	500	487	474	461	448	435	421	408	395	380
365M	3	595	579	566	553	540	527	514	500	487	474	460
365N	5	700	684	668	653	637	622	606	591	575	559	545
365P	7½	795	777	761	746	730	715	699	684	668	653	635
365R	10	870	854	837	820	803	786	769	751	734	717	700

Actual speeds may vary as much as ± 5%

Based on motor RPM of 1725

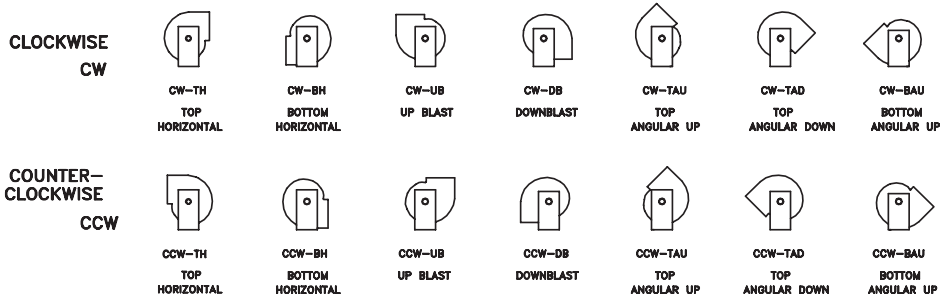
### CHANGING DISCHARGE

1. Read instructions thoroughly and plan all moves before starting.
2. Remove the inlet collar, inlet cone and inlet side support by removing the bolts around the inlet collar.
3. Remove access door by removing (8) 1/4" x 3/4" bolts.
4. Turn the fan on its side such that the inlet is down.
5. Remove the nuts that attach the mounting plate to the housing.
6. For sizes 270-365 ONLY:
  - (a) For Bottom Horizontal, Bottom Angular Upblast, and Upblast rotations the mounting plate should be bolted in the top set of holes in the drive supports and a long inlet side support is needed.
  - (b) For Top Horizontal, Top Angular Down, Downblast and Top Angular Upblast rotations the mounting plate should be bolted in the bottom set of holes in the drive supports and a short inlet side support is needed.
7. Rotate the mounting plate to obtain the desired outlet position.
8. Attach the mounting plate to the housing with the nuts that were removed from these studs.
9. Return fan to the upright position.
10. Re-assemble inlet cone, inlet collar and inlet side support to the housing using the same nuts that were removed from these studs.
11. Turn the wheel by hand to check for any binding.
12. If any adjustment is needed, refer to # 9 under Installation.
13. Replace the access door using the same bolts that were removed from these holes.

**NOTE:** Outlet flange interferes with fan base on downblast discharge arrangements.

### FAN DISCHARGE ARRANGEMENTS

Utility sets are available for the following discharge arrangements in either clockwise (cw) or counterclockwise (ccw) rotation as viewed from the drive side.



## TERMS AND CONDITIONS OF SALE

**ACCEPTANCE** All orders and sales are subject to written approval and acceptance by an executive officer of the Company at Muskogee, Oklahoma, and are not binding on the Company until so approved.

**DELIVERY** All shipping and delivery dates are estimated only. No delays in delivery will subject the Company to any costs, damages or fees for late delivery. Delivery of the products herein specified shall be made F.O.B. point of shipment, unless otherwise stated. The Company shall not be liable for delay due to causes beyond its reasonable control, such as Acts of God, acts of the purchaser, acts of civil or military authorities, priorities, fires, strikes, floods, epidemics, war, riots, delays in transportation, car shortages, and inability, due to reasons beyond its reasonable control, to obtain necessary labor, material, or manufacturing facilities. In the event of such a delay, the date of delivery shall be extended for a period equal to the time lost by reason of the delay.

**TERMS OF PAYMENT** If, in the judgment of the Company, the financial condition of the purchaser at any time does not justify continuation of manufacture or shipment on the terms of payment specified, the Company may require full or partial payment in advance.

Pro rata payments shall become due as shipments are made. Each shipment or delivery shall constitute a separate sale, and the default of any shipment or delivery shall constitute a separate sale, and the default of any shipment or delivery shall not vitiate the contract as to other shipments or deliveries.

**PRICE ADJUSTMENT** Prices are subject to change until the Purchaser's order has been accepted by the Company.

**SALES AND SIMILAR TAXES** The Company's prices do not include sales, use, excise, or similar taxes. Consequently, in addition to the price specified herein, the amount of any present or future sales, use, excise, or other similar tax applicable to the sale of the product

herein shall be paid by the Purchaser, or in lieu thereof the Purchaser shall provide the Company with a tax exemption certificate acceptable to the taxing authorities.

**CANCELLATION** Any contract resulting from the Purchaser's order may be canceled by the Purchaser only by negotiations and upon payments of reasonable cancellation charges which will take into account expenses already incurred and commitments made by the Company.

**DESIGN CHANGES** The Company reserves the right to make changes in design, improvements and additions in and to its products any time without imposing any liability or obligations to itself to apply or install the same in any product manufactured by it.

**TITLE** The title and right of possession of the products sold herein shall remain with the Company and such products shall remain personal property until all payments herein (including deferred payments whether evidenced by notes or otherwise) shall have been made in full in cash and the Purchaser agrees to do all acts necessary to perfect and maintain such right and title in the Company.

**PRICE ADJUSTMENTS AND PROTECTION** Prices on products manufactured by the Company are firm for shipment up to four months from the date of the original order entry. Such prices are subject to adjustment if shipment is made after four months and up to ten months from the date of the original order entry, if products are shipped ten months from the date of the original order entry, prices will be adjusted to the price in effect at the time of shipment automatically. All complete component accessory material manufactured by others and furnished with the Company's products such as motors, drives, vibration equipment, controls or other completely assembled component structures, are subject to adjustment to the price at time of shipment regardless of the date of original order entry.

**SAFETY ACCESSORIES** The Company manufactures products designed to serve multiple applications and offers a wide range of safety equipment, including guards and other devices, as may be required to meet customer specifications. Without exception, the Company recommends that all orders include applicable safety devices. Products ordered without applicable safety devices is clearly the responsibility of the Purchaser. Further, the Purchaser warrants that it has determined and acquired any and all safety devices required for products sold by the Company. Weather covers and guards for motor and V-belt drives, couplings, shafts and bearings, along with inlet and outlet screens, are optional accessories noted in the price list.

**GOVERNING LAW** The rights, obligations and remedies of Purchaser and the Company, the interpretation of these terms and conditions and the sale of products by the Company shall be governed by Oklahoma law, without regard to any principles of conflict of laws.

**ARBITRATION** Any dispute arising under or in connection with these terms and conditions or the sale of products shall be settled by binding arbitration administered by the American Arbitration Association under its Commercial Arbitration Rules, and judgment on the award rendered by the arbitrator may be entered in any court having jurisdiction thereof. The dispute shall be resolved by one neutral arbitrator who shall have no affiliation with either Purchaser or the Company and shall be selected by the American Arbitration Association office in Dallas, Texas. The arbitration proceedings shall be held in Muskogee, Oklahoma.

**APPLICABLE DOCUMENTS** The agreement between the Company and the Purchaser relating to the products includes these terms and conditions of sale, any applicable installation and maintenance instructions provided by the Company and any terms appearing on the Company's quotation, sales order acknowledgment and invoice.

**WARNING** The Company products are designed and manufactured to provide reliable performance but they are not guaranteed to be 100% free of defects. Even reliable products will experience occasional failures and this possibility should be recognized by the Purchaser and all End Users. If these products are used in a life support ventilation system where failure could result in loss or injury, the Purchaser and all End Users should provide adequate back-up ventilation, supplementary natural ventilation or failure alarm system, or acknowledge willingness to accept the risk of such loss or injury.

**WARNING DO NOT use in HAZARDOUS ENVIRONMENTS** where fan's electrical system could provide ignition to combustible or flammable materials unless unit is specifically built for hazardous environments. Comply with all local and national safety codes including the National Electrical Code (NEC) and National Fire Protection Act (NFPA).

**CAUTION** Guards must be installed when fan is within reach of personnel or within seven (7) feet (2.134 m) of working level or when deemed advisable for safety.

**DISCLAIMER** The Company has made a diligent effort to illustrate and describe the products accurately in all Company literature; however such illustrations and descriptions are for the sole purpose of identification and do not express or imply any warranty.

## LIMITED WARRANTY

**WARRANTY AND DISCLAIMER:** the Company extends this limited warranty to the original purchaser and warrants that products supplied by the Company, shall be free from original defects in workmanship and materials for two years from date of shipment (except for the warranty periods noted for products listed below), provided same have been properly handled, stored, installed, serviced, maintained and operated. This warranty shall not apply to products which have been altered or repaired without the Company's express authorization, or altered or repaired in any way so as, in the Company's judgment, to affect its performance or reliability, nor which have been improperly installed or subjected to misuse, negligence, or accident, or incorrectly used in combination with other substances. The Purchaser assumes all risks and liability for results of use of all products.

Evaporative cooling pads are warranted to be free of defects in materials and workmanship for a period of two years from date of shipment provided same have been properly handled, stored, installed, serviced, maintained and operated; and further, not subjected to excessive heat, corrosive agents or chemicals, or mechanical abuse that may cause tearing, crushing or undue deterioration, nor used on a system or in a manner other than that for which it was designed as explained in the product literature.

The following products are warranted to be free of defects in materials and workmanship for a period of periods shown from date of shipment: the Company's exclusive duplex split pillow block bearings and shaft five years, belts one year, Polyethylene tubing 90 days, AIR40 Heater warranty one year, AIR40 Emitter warranty three years and DDP fan lifetime warranty on its propeller, cone, and housing.

**LIMITATION OF REMEDY AND DAMAGES:** All claims under this warranty must be made in writing and delivered to P. O. Box 978, Muskogee, Oklahoma, 74402, within 15 days after discovery of the defect and prior to the expiration of two years from the date of shipment by the Company of the product claimed defective, and Purchaser shall be barred from any remedy if Purchaser fails to make such claim within such period.

Within 30 days after receipt of a timely claim, the Company shall have the option either to inspect the product while in Purchaser's possession or to request Pur-

chaser to return the product to the Company at Purchaser's expense for inspection by the Company. The Company shall replace, or at its option repair, free of charge, any product it determines to be defective, and it shall ship the repaired or replacement product to Purchaser F.O.B. point of shipment; provided, however, if circumstances are such as in the Company's judgment to prohibit repair or replacement to remedy the warranted defects, the Purchaser's sole and exclusive remedy shall be a refund to the Purchaser of any part of the invoice price, paid to the Company, for the defective product or part.

The Company is not responsible for the cost of removal of the defective product or part, damages due to removal, or any expenses incurred in shipping the product or part to or from the Company's plant, or the installation of the repaired or replaced product or part.

The warranties set forth above do not apply to any components, accessories, parts or attachments manufactured by other manufacturers; such being subject to the manufacturer's warranty, if any. To the extent not prohibited by the manufacturer's warranty, the Company shall pass through to Purchaser such manufacturer's warranty.

**THE COMPANY'S WARRANTY IS IN LIEU OF ALL OTHER WARRANTIES, EXPRESS OR IMPLIED, ARISING BY LAW OR OTHERWISE, INCLUDING WITHOUT LIMITATION THE IMPLIED WARRANTIES OF MERCHANTABILITY AND FITNESS FOR A PARTICULAR PURPOSE, WHICH ARE HEREBY EXPRESSLY DISCLAIMED AND WAIVED. THIS WARRANTY CONSTITUTES THE COMPANY'S SOLE AND EXCLUSIVE WARRANTY FOR DEFECTIVE GOODS AND PURCHASER'S SOLE AND EXCLUSIVE REMEDY FOR DEFECTIVE PRODUCTS.**

No employee, agent, dealer, or other person is authorized to give any warranties on behalf of the Company or to assume for the Company any other liability in connection with any of its products except in writing and signed by an officer of the Company.

**REPLACEMENT PARTS** If replacement parts are ordered, purchaser warrants that the original components in which these replacement parts will be placed are in satisfactory working condition, and when said replacement parts are installed, the resultant installation

will operate in a safe manner, at speeds and temperatures for which the original product was purchased.

**TECHNICAL ADVICE AND RECOMMENDATIONS, DISCLAIMER:** Notwithstanding any past practice or dealings or any custom of the trade, sales shall not include the furnishing of technical advice or assistance or system design. Any such assistance shall be at the Company's sole option and may be subject to additional charge.

The Company assumes no obligation or liability on account of any recommendations, opinions or advice as to the choice, installation or use of products. Any such recommendations, opinions or advice are given and shall be accepted at Purchaser's and End User's risk and shall not constitute any warranty or guarantee of such products or their performance.

**LIMITATION OF LIABILITY** The cumulative liability of the Company to the Purchaser and any other persons for all claims in any way relating to or arising out of the products, including, but not limited to, any cause of action sounding in contract, tort, or strict liability, shall not exceed the total amount of the purchase price paid for those products which are the subject of any such claim. This limitation of liability is intended to apply without regard to whether other provisions of this agreement have been breached or have proven ineffective even if the Company has been advised of the possibility of such claims or demands. In no event shall the Company be liable to the Purchaser or any other person for any loss of profits or any incidental, special, exemplary, or consequential damages for any claims or demands brought by the Purchaser or such other persons.

**INDEMNITY** The Company's maximum liability to Purchaser and to any end user is as set forth above. The Company makes no warranty to anyone for any products not manufactured by the Company and shall have no liability for any use or installation of any products (whether manufactured by the Company or other manufacturers) not specifically authorized by this sale. Purchaser acknowledges various warnings by the Company regarding the products and its installation and use. If the Company incurs any claims, lawsuits, settlements, or expenses (including attorney fees) for any loss, injury, death or property damage including, but not limited to, claims arising out of the Purchaser's or any end user's installation or use of the products, the Purchaser shall indemnify and hold the Company harmless.