

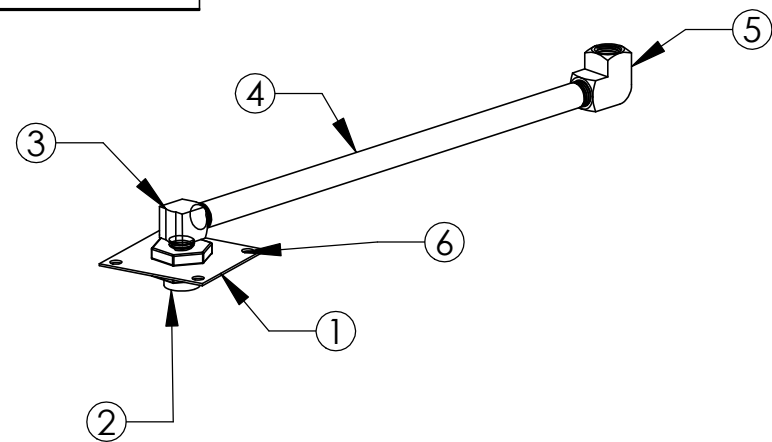
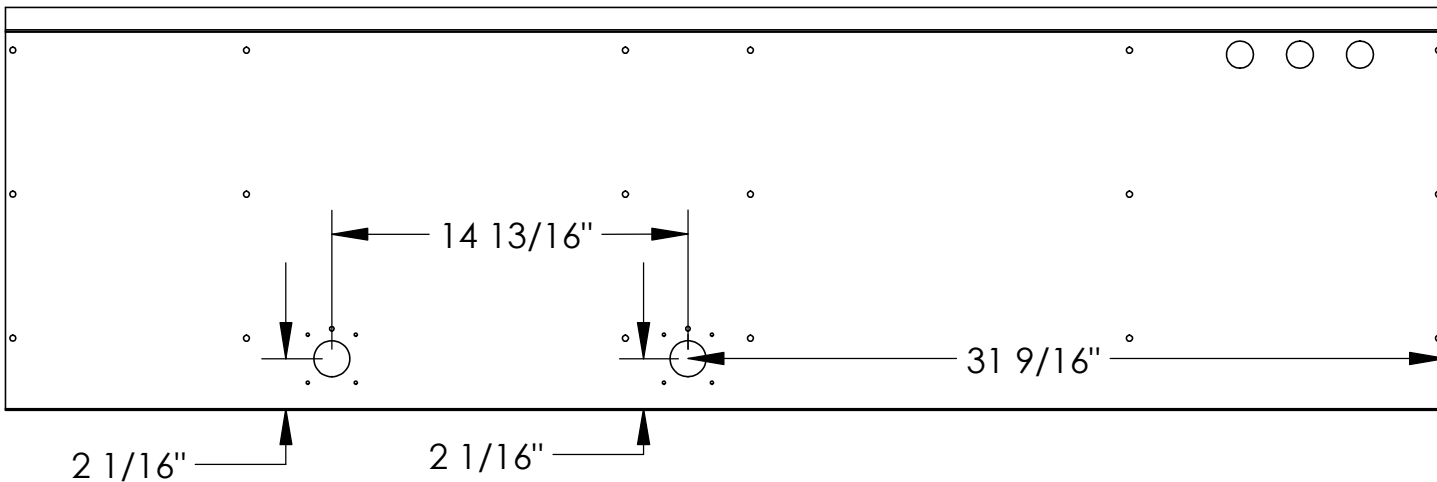
IBT CONDENSATION
DRAIN KIT
FIELD INSTALLATION
01/9/2014

Installation Instructions:

1. If drain pans are present in unit, remove them.
2. Drill 1 1/2" holes through the IBT cabinet floor, insulation, and bottom plate in the locations shown below. Both holes will need drained if it is a dual furnace unit.
3. Silicone around IBTDRAINPLATE and fasten drain assemblies into the cabinet floor using QTY "4" 5/16 sheet metal screws. Ensure that fitting ⑤ is under the drain barb located on the IBT furnace and that the assembly is sloping away from the furnace. Reference image A for more detail.
4. Drill a 7/8" hole through the IBT electrical top, centered between the Fenwal controllers. Mount the junction box onto the electrical top using 5/16" sheet metal screws. Ensure that enough room is left to close the IBT door.
5. Cut out the insulation below the junction box and install the 1/2" straight fitting.

Revision History				
#	Description	Revised by	ECN#	Date
0	Released to production	JJH	2695	1/9/14

Cabinet Floor



Part Directory

Part Name (part #)	Part Quantity			
	1 Furnace	2 Furnaces	3 Furnaces	4 Furnaces
1 IBTDRAINPLATE	1	2	3	4
2 1/4" Quik Seal (#218)	1	2	3	4
3 1/4-Brass-90-Street-Elbow-MP	1	2	3	4
4 1/2" Brass Threaded Nipple (#456K146)	1	2	3	4
5 1/4-Brass-90-Elbow-MP	1	2	3	4
6 5/16" x 1/2" Sht. Mtl. Screws (#ITH41234)	4	8	12	16
7 10" Insulation (#2CKF2-MPU-INCH)	1	2	3	4
8 Heat Tape (#3580K22)	1	1	2	2
9 Junction Box (#58371-1/2)	1	1	2	2
10 Junction Box Cover (#58-C-1)	1	1	2	2
11 Connector 1/2" Straight (#3231)	1	1	2	2
12 Zip Tie Black (#3LP35)	10	10	20	20

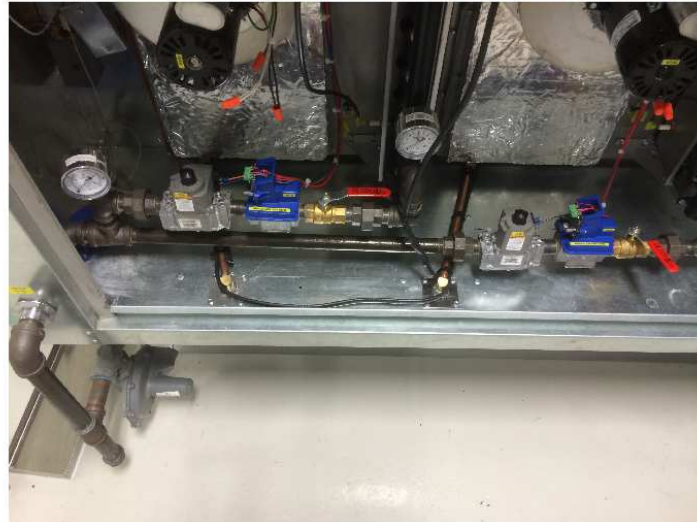
Installation Instructions:

- 6. Install the heat tape onto the drain pipes using the zip ties. Reference picture below (A). If you have any excess heat tape, fasten it onto the main gas line so that it doesn't interfere with other parts.
- 7. Install the 10" segments of insulation over the drain lines. Leave space between the furnace and the insulation. Reference picture (B,C).
- 8. Cut the excess wire down from the heat tape and wire into the junction box. Reference the wire schematic.

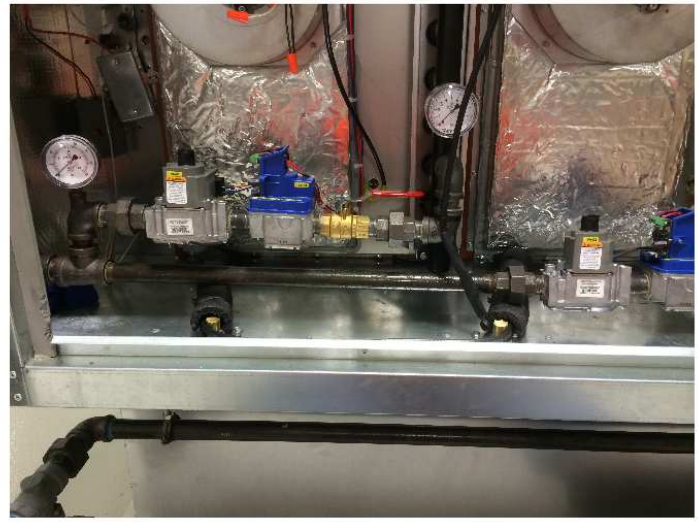
Note: The heat tape is temperature regulated, and it is not always on. It only cycles on when the unit calls for heat.

Revision History				
#	Description	Revised by	ECN#	Date
0	Released to production	JJH	2695	1/9/14

A



B



C

