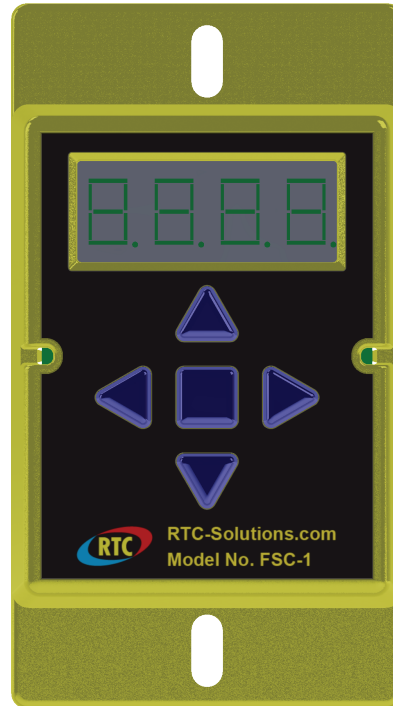


Model No. FSC-1



EC MOTOR CONTROL



This manual covers the following product(s):

FSC-1 Fan Speed Control

Table of Contents

Overview.....	2
Normal Operation.....	2
Programming.....	2
Menu map.....	3
Alarms.....	3
Installation.....	4
Specifications.....	4

Overview

The FSC-1 is a digital EC motor control. The control has a simple five button interface with a four digit LED display. All programmable parameters can be accessed through the user menu with the five button interface. There are two ECM connectors with modulating outputs, one RPM feedback, and one 0-10V DC input. User parameters are stored in non-volatile memory and are retained even during a power outage.

The FSC-1 is powered by 24V AC.

Normal Operation

Every ten seconds the FSC-1 display will toggle between the current percent of run speed and the current RPMs. The percent of run speed can be changed by using the **UP▲** and **DN▼** keys followed by the **ENT** key to save your changes. If the remote function is enabled, the speed is controlled through the 0-10V input. 0V being 0% and 10V being 100%, unless overridden by the low speed and high speed limits. You can access programming mode by holding the enter key for three seconds.

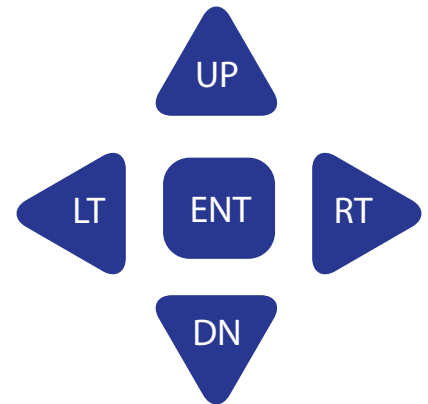
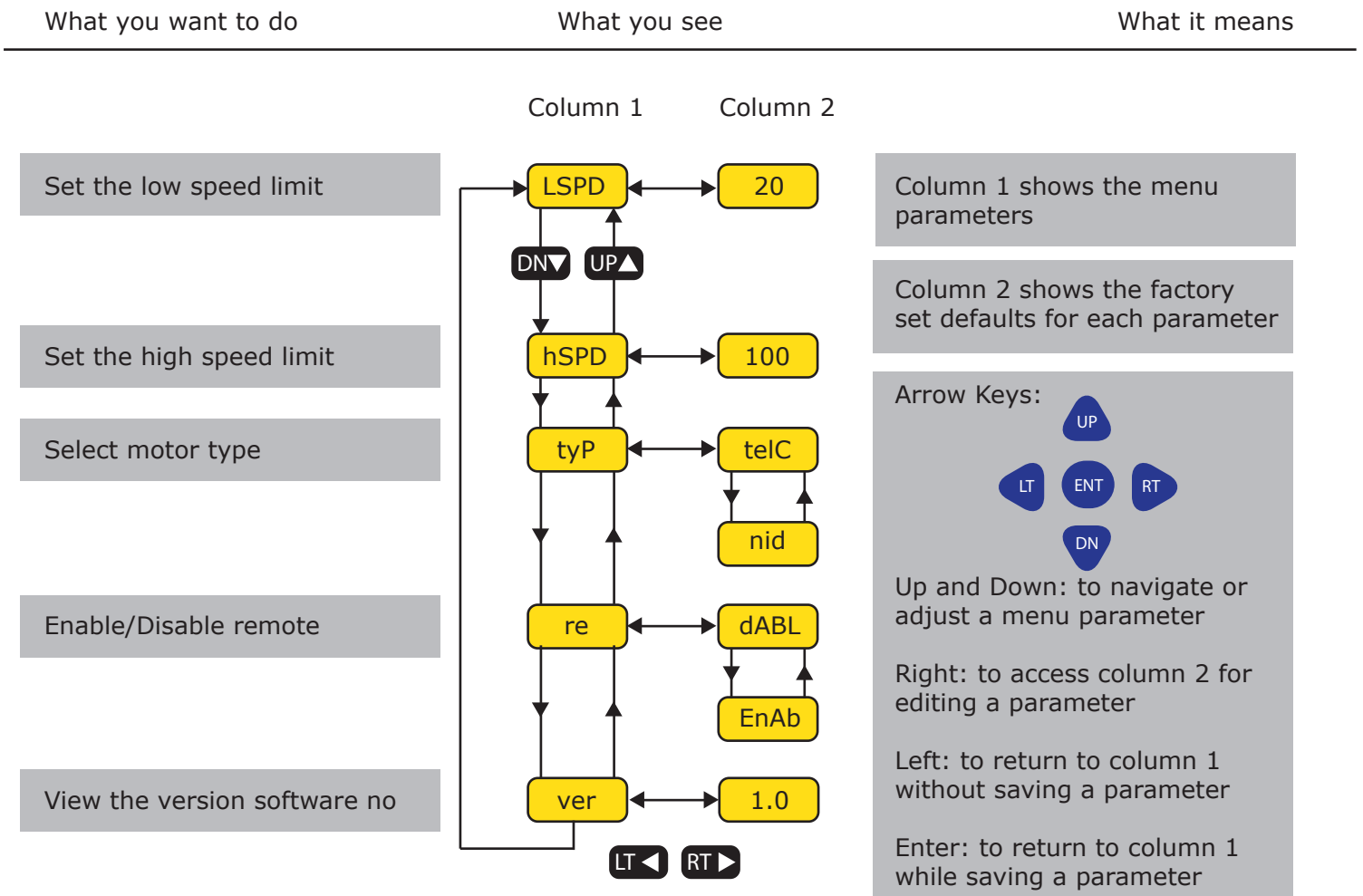


Figure 1: FSC-1 Keys

Programming

Please refer to the "FSC-1 Menu Map" on page 3 for editing parameters within program mode. To enter program mode hold the **ENT** key for three seconds until "LSPD" is displayed. Use the **UP▲** and **DN▼** keys to navigate to the desired menu parameter shown in column 1 of the menu map on page 3. To edit a menu parameter press the **RT▶** key once on the desired parameter. The current value will be displayed in column 2 of the menu map on page 3. Also use the **UP▲** and **DN▼** keys to change values within a parameter. Once editing is complete you can press **ENT** to save your changes or the **LT◀** key to cancel without saving. If a key is not pressed for ten seconds, the control will return to normal operating mode.

FSC Menu Map



Arrow Keys:

Up and Down: to navigate or adjust a menu parameter

Right: to access column 2 for editing a parameter

Left: to return to column 1 without saving a parameter

Enter: to return to column 1 while saving a parameter

Figure 2: Menu map

Alarms

Error messages on the FSC-1 will scroll across the display with a detailed message.

This will help users to resolve issues faster. Possible errors are as follows:

1. "oFF"- The FSC-1 is not receiving RPM feedback.

To resolve an issue refer to "Installation" on page 4 for proper wiring connections.

Installation

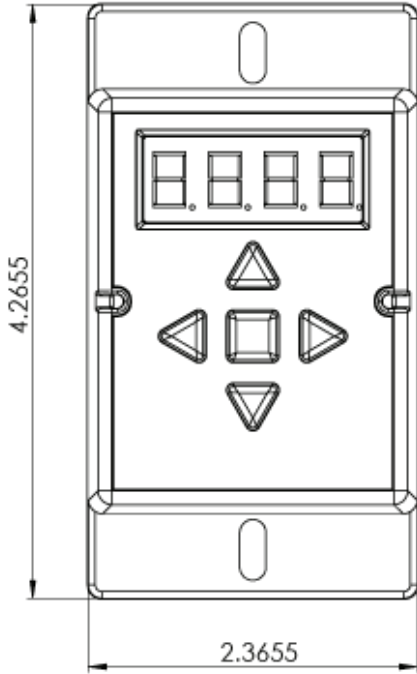


Figure 3: FSC-1 Front Panel

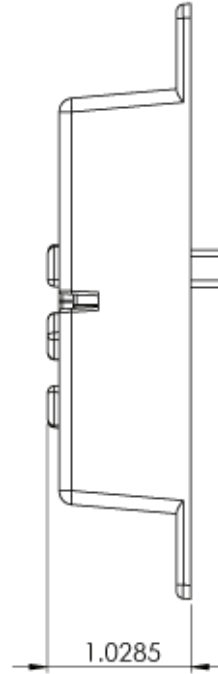
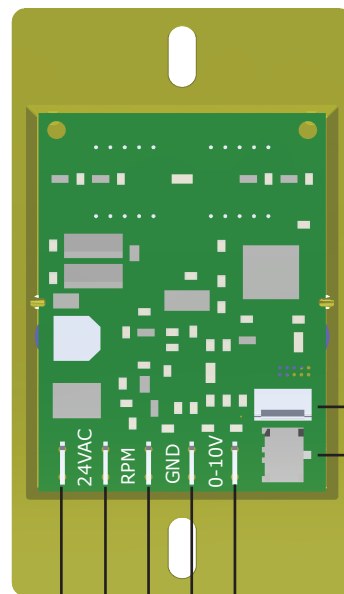
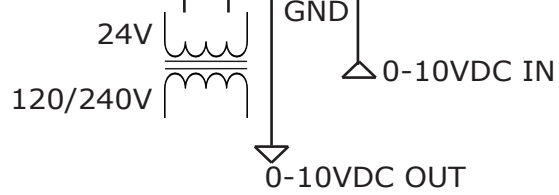


Figure 4: FSC-1 Side View



Nidec EC Motor
Telco Green EC Motor



Specifications

Power Requirements	24VAC @ 20VA
Ambient Operating Temperature	-40°F-140°F -40°C-60°C

DOC# T0011 11.11.2015