

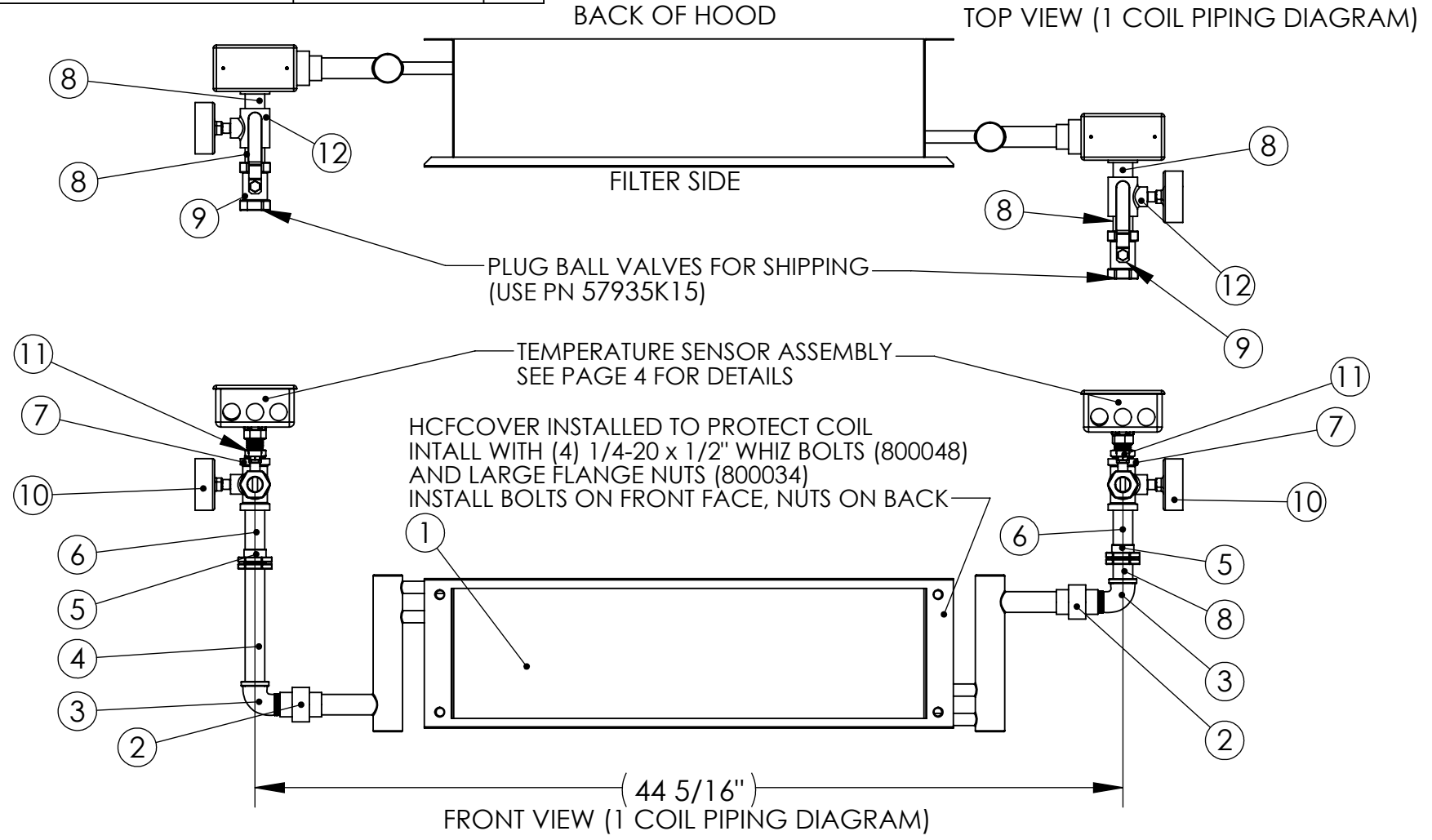
HOOD COIL
ASSEMBLY
INSTRUCTIONS
10/03/13

PARTS LIST

NUMBER	DESCRIPTION	PART NUMBER	QTY
1	COIL	5WS0605A-7.5x24-E	1
2	3/4" BRASS UNION	4429K215	2
3	3/4" STREET ELBOW	4429K154	2
4	3/4" x 6-1/2" NIPPLE	4568K395	1
5	QUICK SEAL	172	2
6	3/4" x 2 1/2" NIPPLE	4568K193	2
7	3/4" BRASS TEE	4429K254	2
8	3/4" CLOSE NIPPLE	4568K191	5
9	3/4" BALL VALVE	10404	2
10	TEMPERATURE AND PRESSURE GAUGE	DPTG3-2-1/2	2
11	3/4" TO 1/2" BUSHING	4429K414	2
12	3/4" x 1/2" x 3/4" TEE	BRF2051G	2

Revision History

#	Description	Revised by	ECN#	Date
0	Release for Production	LKB	2512	9/4/13



- NOTES:
- TEFLON TAPE MUST BE USED ON ALL THREADED CONNECTIONS.
 - WATER INLETS SHOULD POINT DIRECTLY TOWARD FRONT OF HOOD.
 - WATER GAUGES MUST FACE THE CLOSEST END OF THE HOOD.

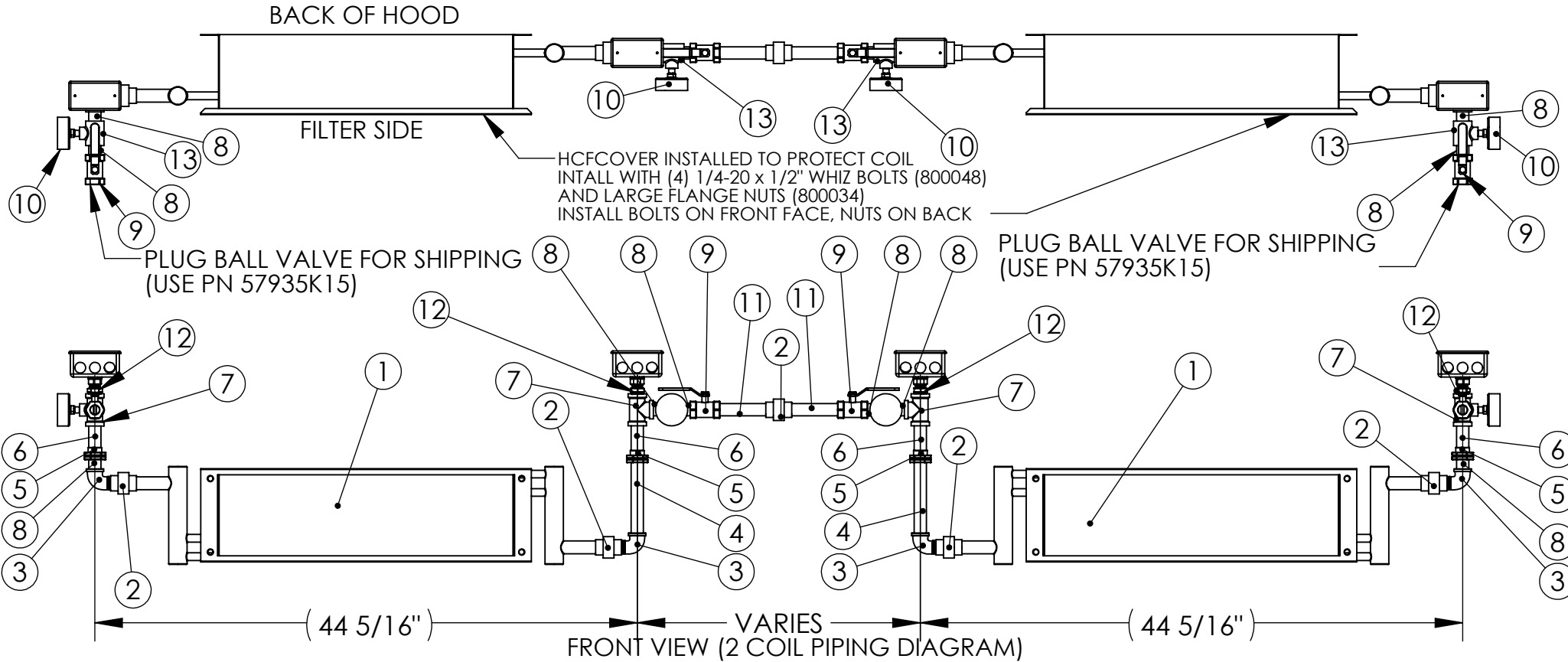
PARTS LIST

NUMBER	DESCRIPTION	PART NUMBER	QTY
1	COIL	5WS0605A-7.5x24-E	2
2	3/4" BRASS UNION	4429K215	5
3	3/4" STREET ELBOW	4429K154	4
4	3/4" x 6-1/2" NIPPLE	4568K395	2
5	QUICK SEAL	172	4
6	3/4" x 2 1/2" NIPPLE	4568K193	4
7	3/4" BRASS TEE	4429K254	4
8	3/4" CLOSE NIPPLE	4568K191	10
9	3/4" BALL VALVE	10404	4
10	TEMPERATURE AND PRESSURE GAUGE	DPTG3-2-1/2	4
11	3/4" x VARIABLE NIPPLE	VARIES	2
12	3/4" TO 1/2" BUSHING	4429K414	4
13	3/4" x 1/2" x 3/4" TEE	BRF2051G	4

Revision History

#	Description	Revised by	ECN#	Date
0	Release for Production	LKB	2512	9/4/13

TOP VIEW (2 COIL PIPING DIAGRAM)
 FLIP COILS TO HAVE PIPING ALIGN AS SHOWN BELOW



- NOTES:
- TEFLON TAPE MUST BE USED ON ALL THREADED CONNECTIONS.
 - WATER INLETS/OUTLETS SHOULD POINT DIRECTLY TOWARD FRONT OF HOOD.
 - WATER GAUGES ON INLETS/OUTLETS MUST FACE THE CLOSEST END OF THE HOOD.
 - WATER GAUGES BETWEEN COILS SHOULD FACE THE FRONT OF THE HOOD.

PARTS LIST

NUMBER	DESCRIPTION	PART NUMBER	QTY
1	COIL	5WS0605A-7.5x24-E	1
2	EXTENSION RING COVER	100-BW	1
3	CONDUIT LOCKNUT	LN101SC	2
4	JUNCTION BOX	58361-1/2	1
5	THERMISTOR TEMPERATURE SENSOR	A/CP-PO-4"-EXPL-HT	1

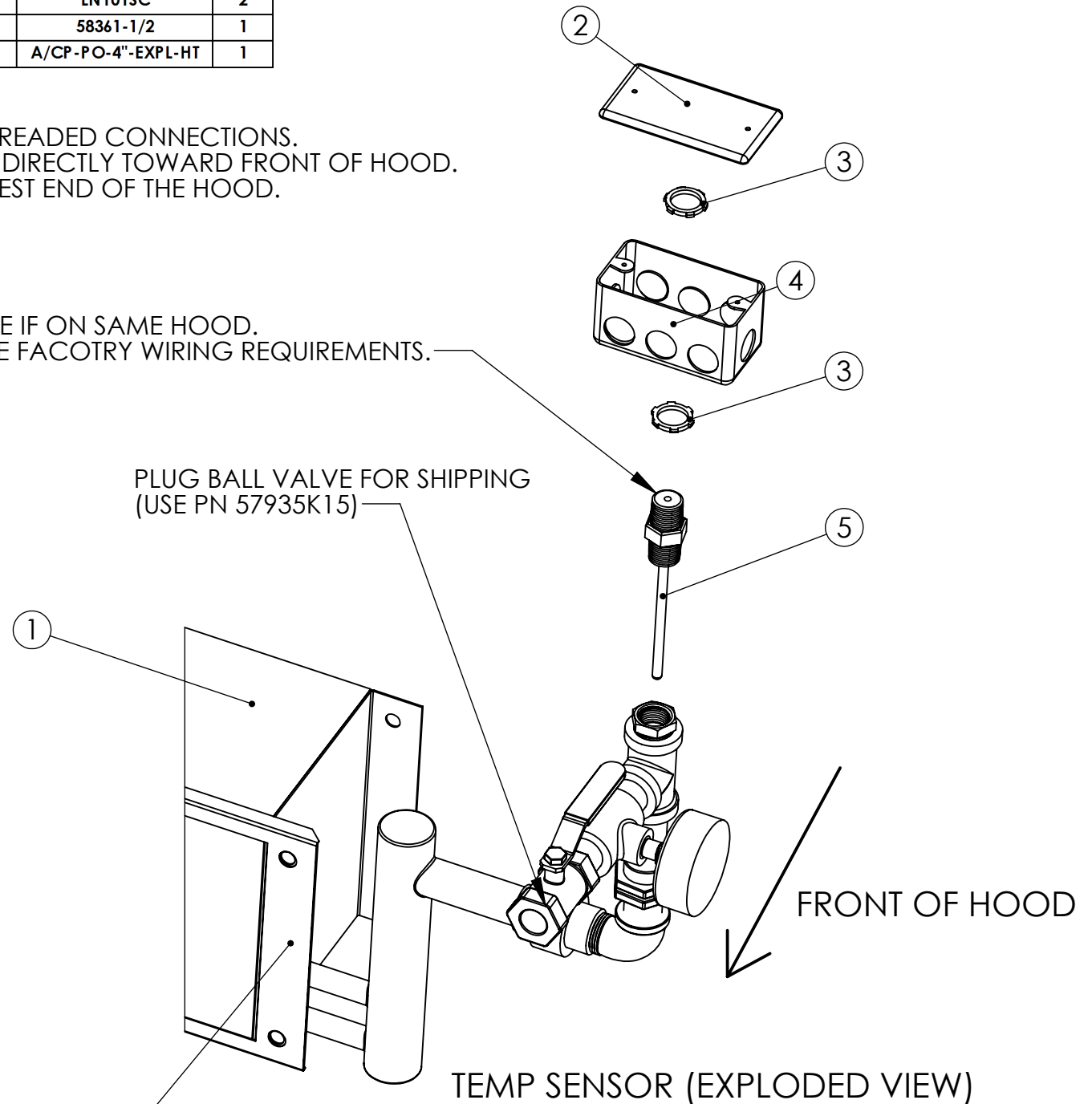
Revision History

#	Description	Revised by	ECN#	Date
0	Release for Production	LKB	2512	9/4/13

NOTES:

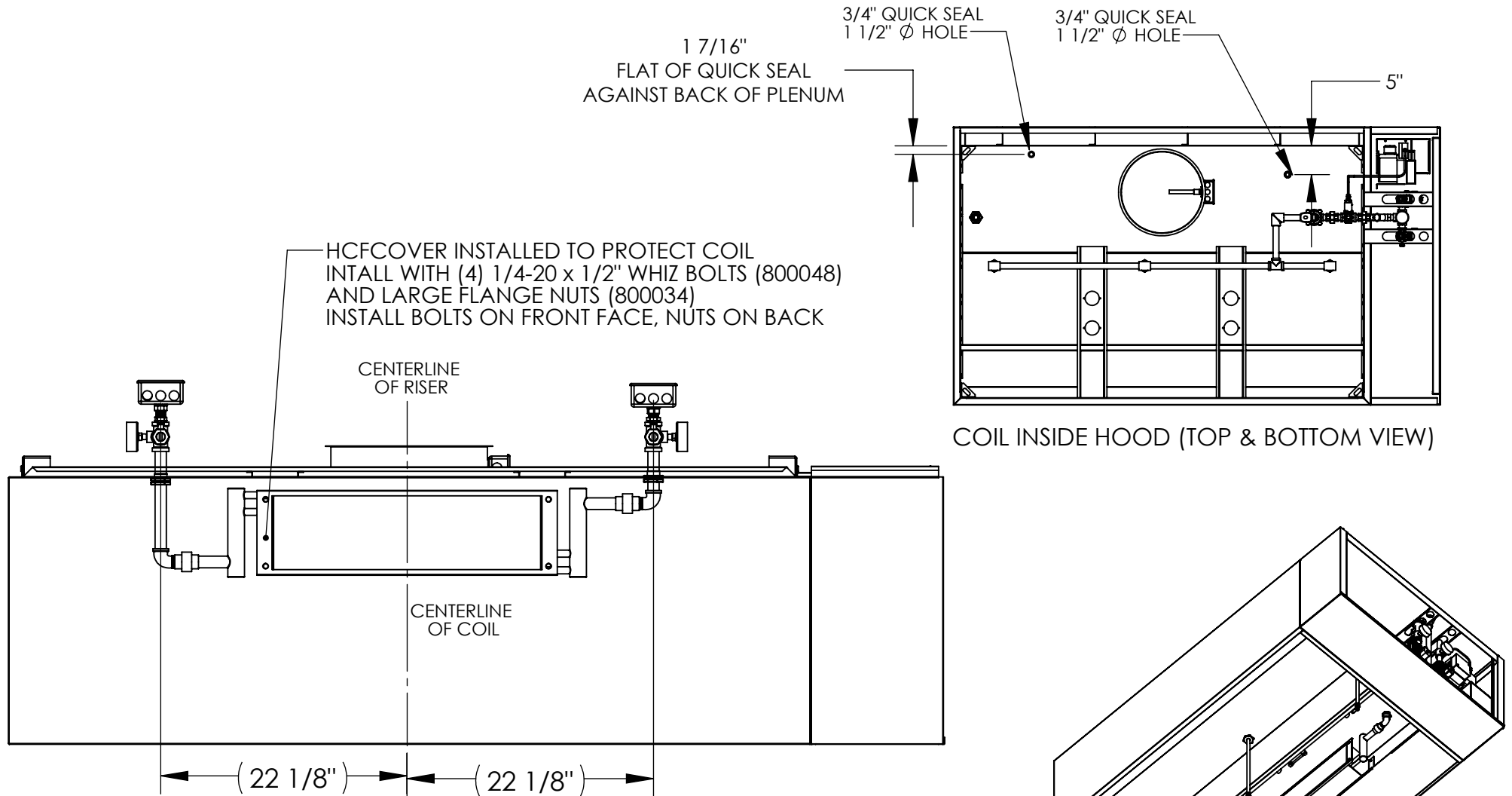
- TEFLON TAPE MUST BE USED ON ALL THREADED CONNECTIONS.
- WATER INLETS/OUTLETS SHOULD POINT DIRECTLY TOWARD FRONT OF HOOD.
- WATER GAUGES MUST FACE THE CLOSEST END OF THE HOOD.

SENSORS SHOULD BE WIRED TO PREWIRE IF ON SAME HOOD.
 REFERENCE SCHEMATICS TO DETERMINE FACOTRY WIRING REQUIREMENTS.



HCFCOVER INSTALLED TO PROTECT COIL
 INTALL WITH (4) 1/4-20 x 1/2" WHIZ BOLTS (800048)
 AND LARGE FLANGE NUTS (800034)
 INSTALL BOLTS ON FRONT FACE, NUTS ON BACK

Revision History				
#	Description	Revised by	ECN#	Date
0	Release for Production	LKB	2512	9/4/13



NOTES:

- TEFLON TAPE MUST BE USED ON ALL THREADED CONNECTIONS.
- CENTERLINE OF COIL TO ALIGN WITH CENTERLINE OF RISER.
- WATER INLETS SHOULD POINT DIRECTLY TOWARD FRONT OF HOOD.
- WATER GAUGES MUST FACE THE CLOSEST END OF THE HOOD.
- COIL SHOULD BE ASSEMBLED INTO HOOD AFTER SPRAY BAR IS INSTALLED.
- PLUG COIL INLET AND OUTLET BALL VALVES FOR SHIPPING. (USE PN 57935K15)
- METAL FIN GUARD HCFCOVER MUST BE INSTALLED ON FILTER SIDE OF COIL TO PROTECT FINS.
- SUGGEST FULLY ASSEMBLING COIL FROM QUICK SEAL DOWN, PLACING IN HOOD PLENUM AND MARKING HOLES TO BE CUT INTO TOP OF HOOD. THIS WILL ENSURE QUICK SEALS ALIGN WITH HOLES.
- WATER MUST BE DRAINED FROM COIL AFTER WATER TESTING. REMOVE PLUGS TO DRAIN. REINSTALL PLUGS AFTER DRAINING.