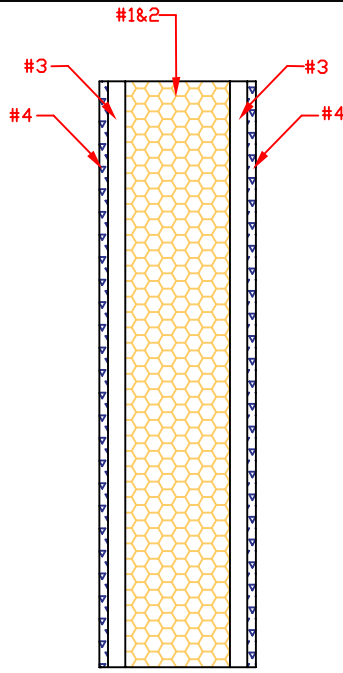
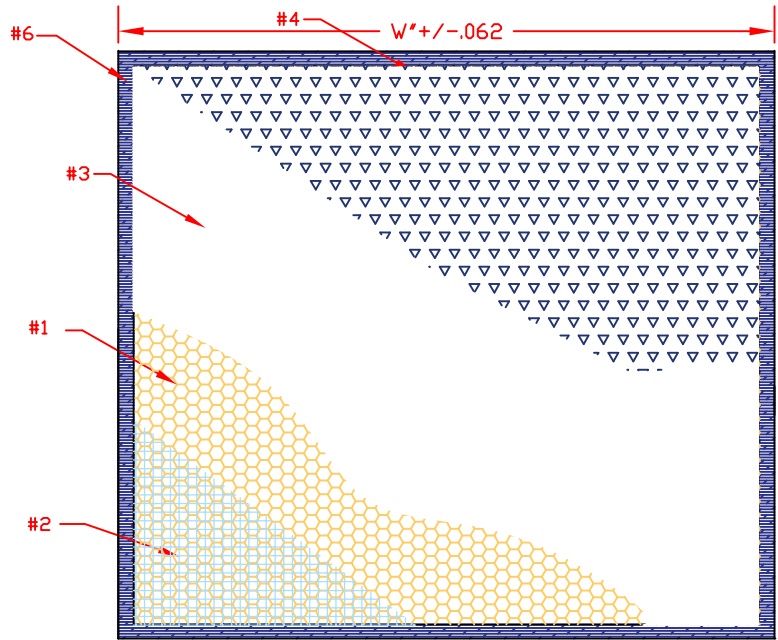
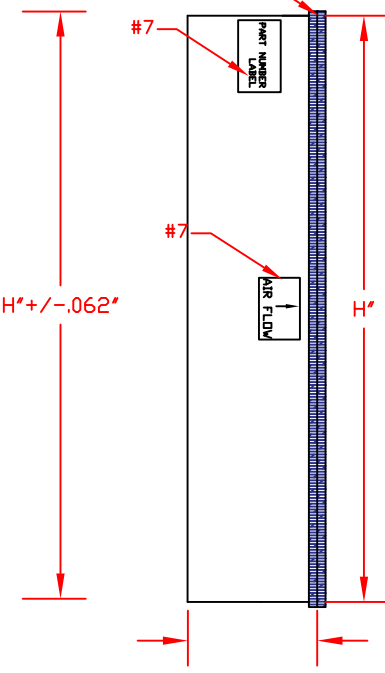
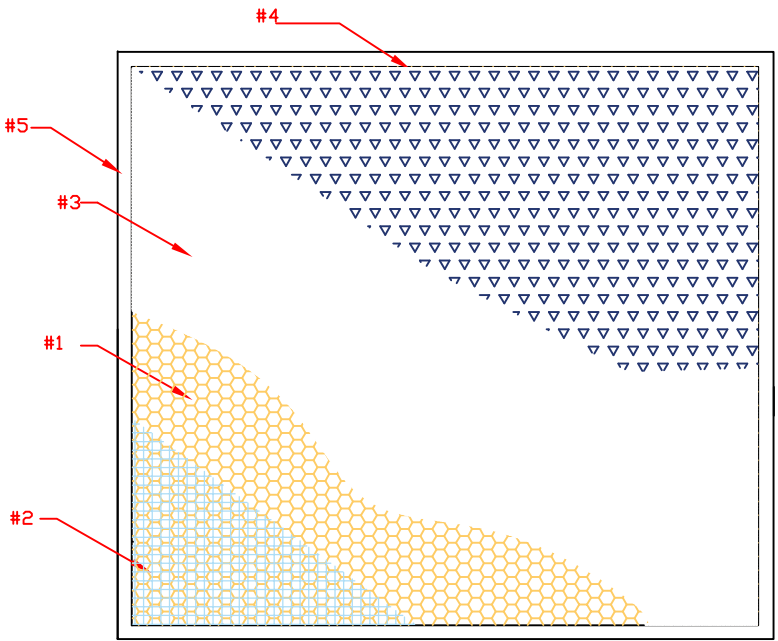


OUT LET VIEW



SIDE VIEW

AIR FLOW →



D' +/- .032

PART NUMBER	MEDIA TYP.	NOMINAL SIZE H X W X D	ACTUAL SIZE H X W X D
34-A0017091	ACTIVATED CARBON	16 X 20 X 4	15.25 X 19.25 X 3.50
34-A0017093	50/50 CARBON/POTASSIUM	16 X 20 X 4	15.25 X 19.25 X 3.50
34-A0017094	POTASSIUM	16 X 20 X 4	15.25 X 19.25 X 3.50
34-A0017092	CAUSTIC KOH IMPREGNATED	16 X 20 X 4	15.25 X 19.25 X 3.50
34-A0017095	ACTIVATED CARBON	20 X 25 X 4	19.25 X 24.25 X 3.50
34-A0017097	50/50 CARBON/POTASSIUM	20 X 25 X 4	19.25 X 24.25 X 3.50
34-A0017098	POTASSIUM	20 X 25 X 4	19.25 X 24.25 X 3.50
34-A0017096	CAUSTIC KOH IMPREGNATED	20 X 25 X 4	19.25 X 24.25 X 3.50

* WEIGHT WILL FLUCTUATE ON MEDIA DENSITY

SPECIFICATIONS

- #1 CORRUGATED; HONEYCOMB SEPERATOR CELLS FILLED WITH MEDIA
- #2 FIBERGLASS SCREEN MESH
- #3 WHITE POLYESTER DUST PAD
- #4 EXPANDED METAL FOR SUPPORT
- #5 FRAME MATERIAL; GALVANIZED (24 GA.)
- #6 EPDM GASKET 5/8 X 3/16 ON FACE FLANGE & PERIMETER
- #7 AIR FLOW STICKERS 4 SIDES PART NUMBER LABEL ONE SIDE

TITLE:		HONEYCOMB	
SCALE:	NTS	REV. NO.	
DRAWN:	MLF.	APPROVED:	DATE: 2/4/16
CHECKED:		CUSTOMER:	